

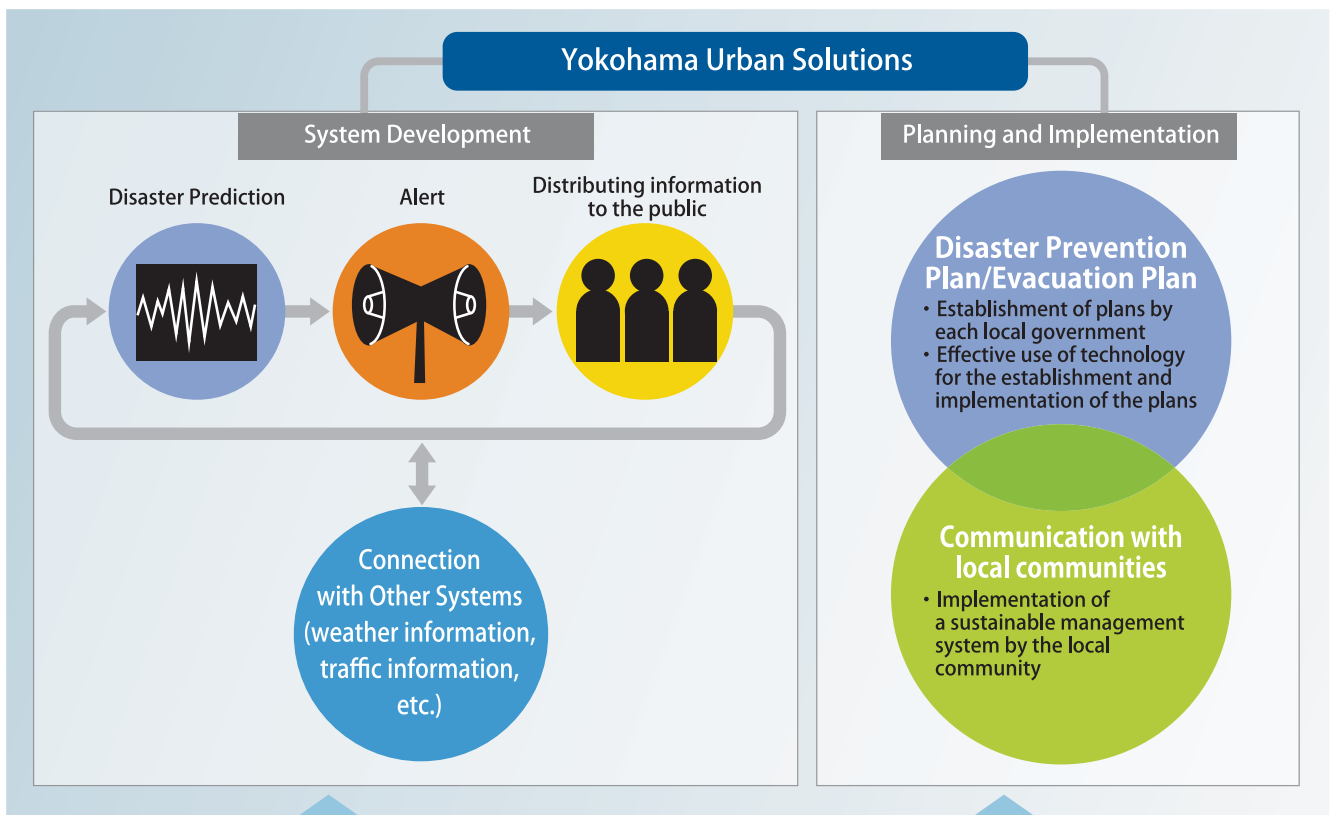
Urban Issues

Although natural disasters caused by climate change are getting worse in many cities in emerging economies, development and maintenance of disaster prevention systems remain inadequate. Comprehensive disaster prevention plans and systems are essential for resiliency.



Introduction of Disaster Prevention Plan and System

Japan has experienced and handled many natural disasters such as earthquakes, typhoons, floods and landslides. The City of Yokohama has developed and implemented a comprehensive system based on both the disaster prevention plans formulated by the City and technologies developed by private sector firms. Development and implementation of a comprehensive disaster mitigation and prevention system in emerging cities is urgently required. The system would need to be developed in collaboration with citizens and include disaster prediction and alert systems, evacuation systems during the disaster and information-sharing platforms for the affected.



Technologies / Products / Services of Private Firms in Yokohama

| Target | Anomaly Detection & Disaster Prediction |
|---|--|
| Anomaly Detection & Disaster Prediction | Water level indicator, rain gage, monitoring camera, flood and landslide simulation system, forest fire monitoring system, etc. |
| Alert | Alert system during heavy rainfall, tsunami prediction system, etc. |
| Information Sharing | Command center, emergency broadcasting equipment, backup wireless communication system, information distribution service through SNS, etc. |

Expertise of the City of Yokohama

- The City of Yokohama formulated disaster prevention plans to respond to both natural disasters, such as earthquakes and typhoons, and man-made disasters. The plans are divided according to three phases: prevention, emergency, and restoration.
- Infrastructure-level: Seismic retrofitting, emergency transport routes, river channel widening, drainage, water retention pond, etc.
- Administration-level: Hazard maps, information dissemination system, disaster response drills, etc.

